

Top Ten Diseases of Trees and Shrubs of 2005

1. Drought Stress

Host:
Anything and everything
Pathogens: None



2. Root Rots

Host:
Anything and everything
Pathogens:
Pythium,
Phytophthora, *Rhizoctonia solani*,
Fusarium, *Cylindrocarpon*



3. Spruce Needle Drop

Host: Spruce
Pathogen:
Setomelanomma holmii (?)



4. Diplodia Tip Blight

Hosts: Pines
(Austrian, red, jack,
Scot's, mugo),
many other conifers
Pathogen:
Diplodia pinea



5. Phomopsis Tip Blight

Hosts: Junipers,
other conifers
Pathogens:
Phomopsis juniperovora,
Phomopsis spp.



6. Rhizosphaera Needle Cast

Hosts: Colorado
blue spruce, other
spruces, many other
conifers
Pathogen: *Rhizosphaera kalkhoffii*



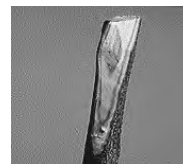
7. Black Knot

Hosts: Plums
and cherries
Pathogen:
Apiosporina morbosa



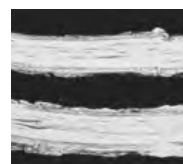
8. Verticillium Wilt

Host: Anything
and everything
Pathogens:
Verticillium albo-atrum,
Verticillium dahliae



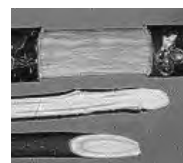
9. Oak Wilt

Host: Oaks
Pathogen:
Ceratocystis fagacearum



10. Dutch Elm Disease

Host: American
elm and other elms
Pathogens:
Ophiostoma ulmi,
Ophiostoma novo-ulmi
(*Ceratocystis ulmi*)



Top Ten Problematic Insect Pests of Trees and Shrubs Anticipated in 2006

1. Two-lined Chestnut Borer

Host: Oaks

2. Bark Beetle

Host: Pines

3. Spruce Spider Mite

Hosts: Arborvitae and Spruce

4. Hickory Bark Beetle (on dry sites)

Host: Hickory

5. Plant Bugs

Host: Ash

6. Plant Bugs and Leafhoppers

Hosts: Honeylocust

7. Euonymus Caterpillar

(in southern part of state)

Host: Burning Bush

8. Japanese Beetle

(in trouble spots from last year)

Host: Favors fruit and flowering trees
and shrubs, but will be seen on many
different species.

9. Gypsy Moth

(in trouble spots from last year)

Host: Mainly Oak

10. European Sawfly

Host: Mainly Mugo Pine, but will
affect other pine species.